



## Transforming Pulmonary Care in the Age of Intelligence

Susan Wood, Ph.D., CEO

[susan@vidalung.ai](mailto:susan@vidalung.ai)

612.247.2889

 @ceo\_vida



# VIDA Transforms Lung Care

In the Age of Intelligence



## **USES IMAGING-BASED AI and PREDICTIVE ANALYTICS**

To Uniquely Profile and Manage the Patient with or at Risk of Lung Disease

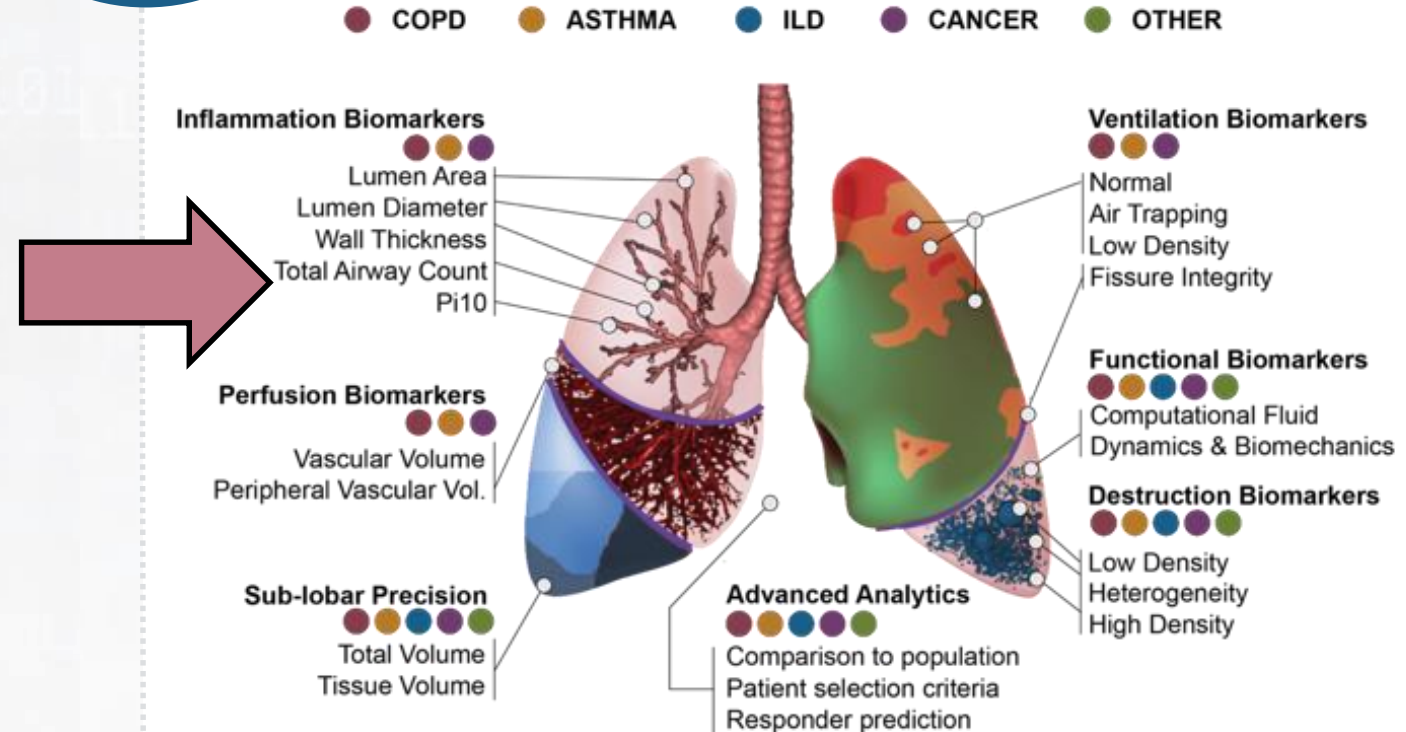
To Provide and Deliver Precision Healthcare

# Transforming Pulmonary Care → Subjective to Objective and Repeatable

Non-optimal measures



PRECISE  
PERSONALIZED  
PREDICTIVE



# Select VIDA Partners



## Academic Partners



## Preclinical Programs



## Channel Partners



# VIDA's Curated Library of Lung Insights



**70+** Trials,  
Ongoing  
Data  
Collection

**Hundred  
Thousands**  
Patient Data  
and  
MetaData

**30+** Imaging  
Clinically  
Validated  
Biomarkers

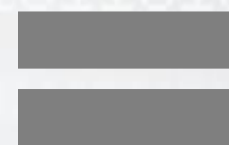
**1.2B+** Precise  
Biomarker  
Measures

**26T+** of  
Comparative  
Precision  
Measures



VIDA Curated Library of  
Patients with/at risk of  
Lung Disease

# Delivers True Personalized Medicine



LungPrint

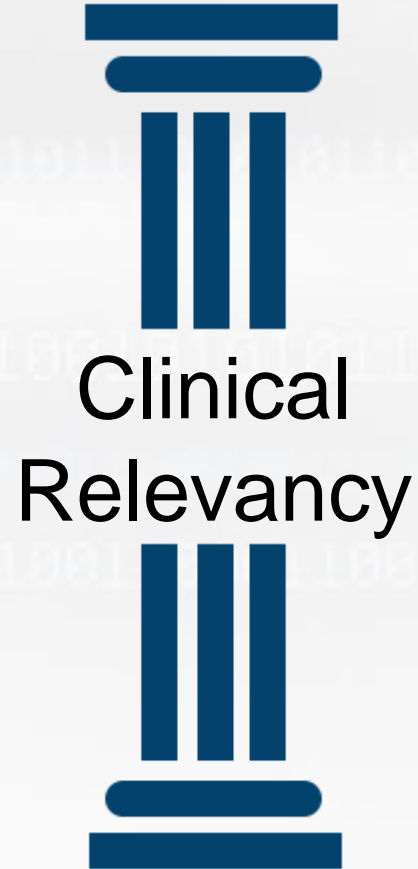
VIDA Curated  
Library of Patients  
with/at risk of  
Lung Disease

VIDA Trade  
Secret AI  
Processing

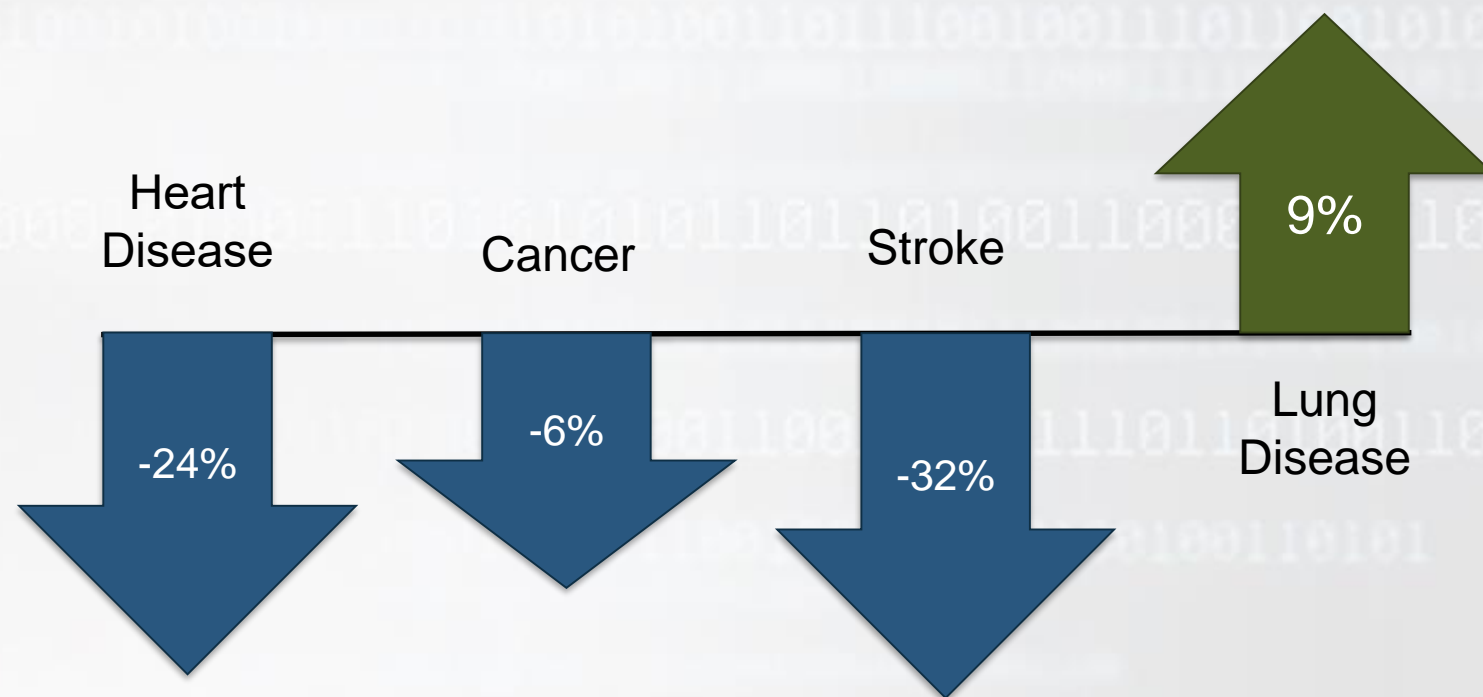
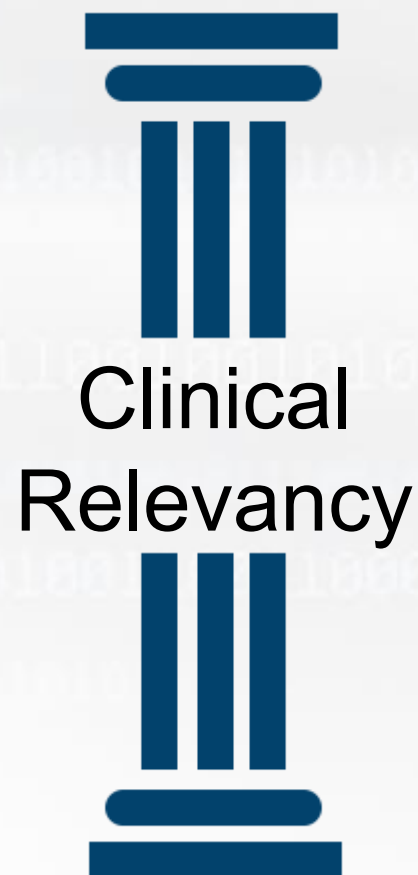
Your Unique  
Lung Profile



# Clinical Readiness for AI



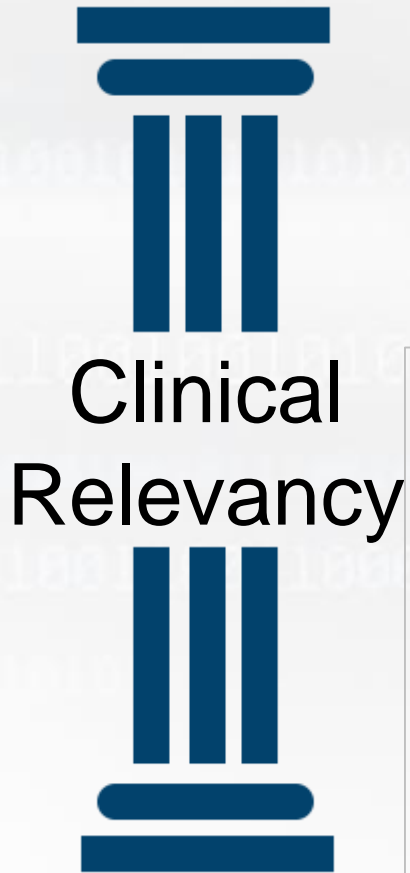
Change in Mortality  
Rate since 2002





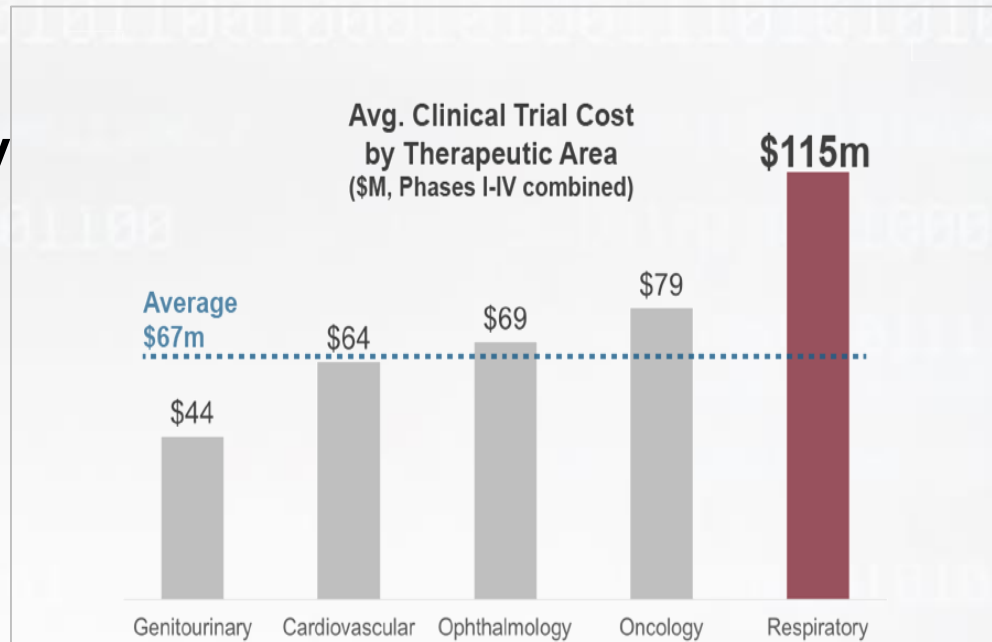
# Clinical Relevancy

Respiratory Trials are Long and Expensive

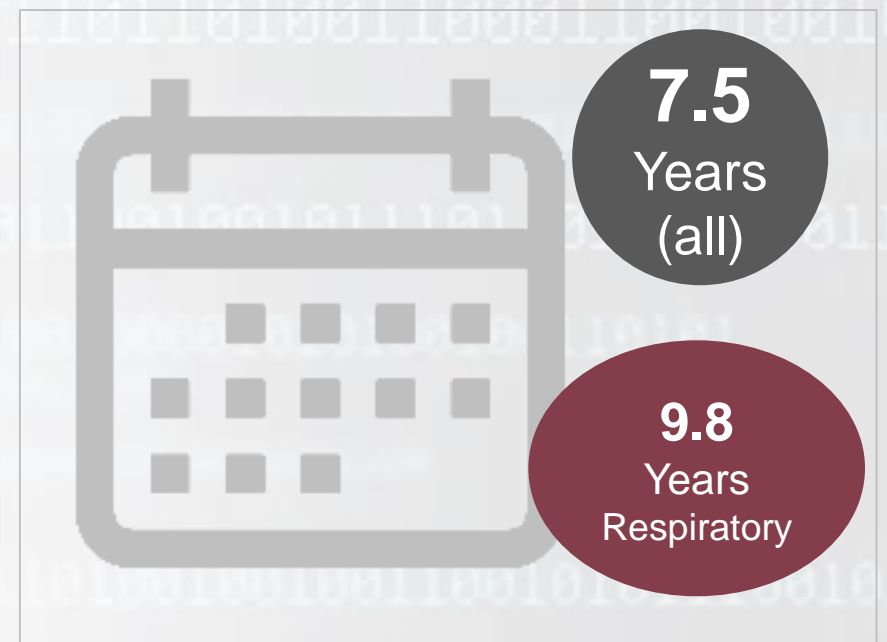


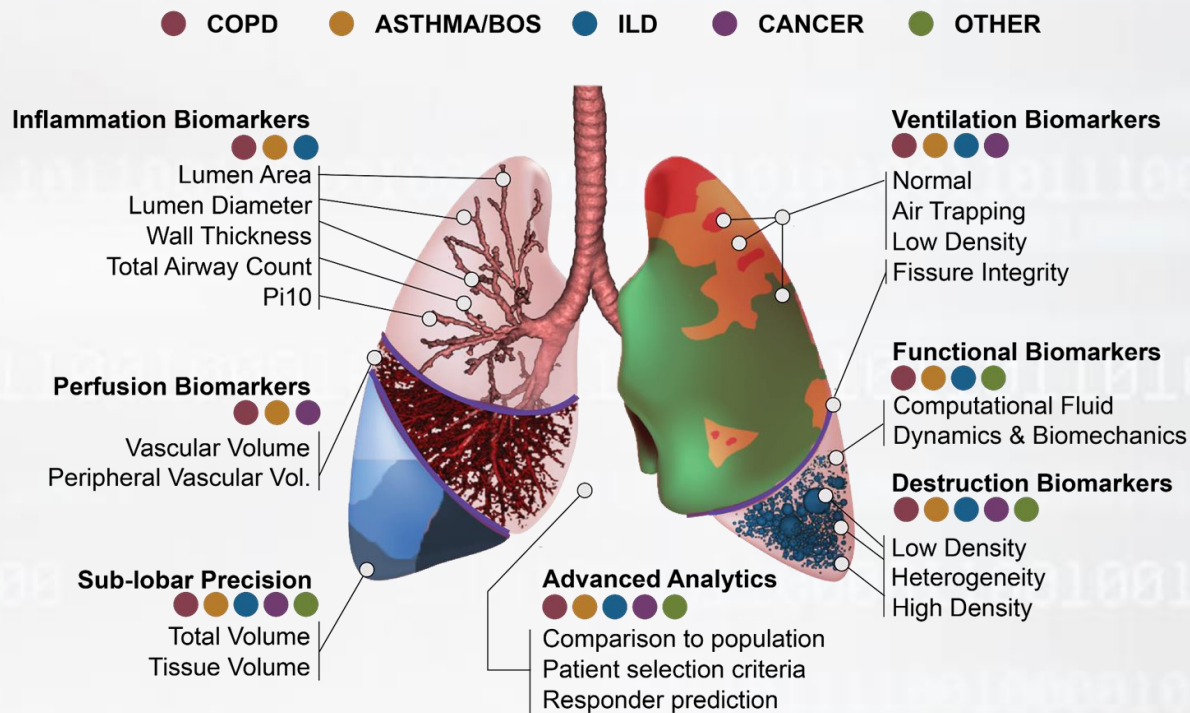
Clinical  
Relevancy

## REDUCED TRIAL COSTS<sup>1</sup>



## SHORTED TIMELINES<sup>1</sup>



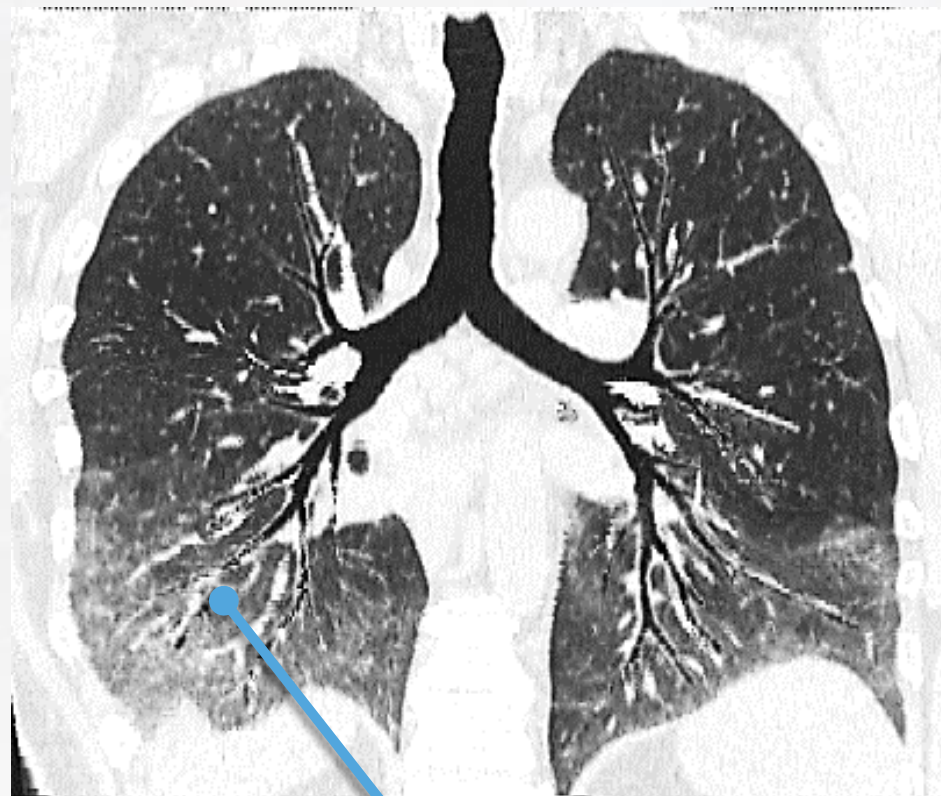


200+ Publications

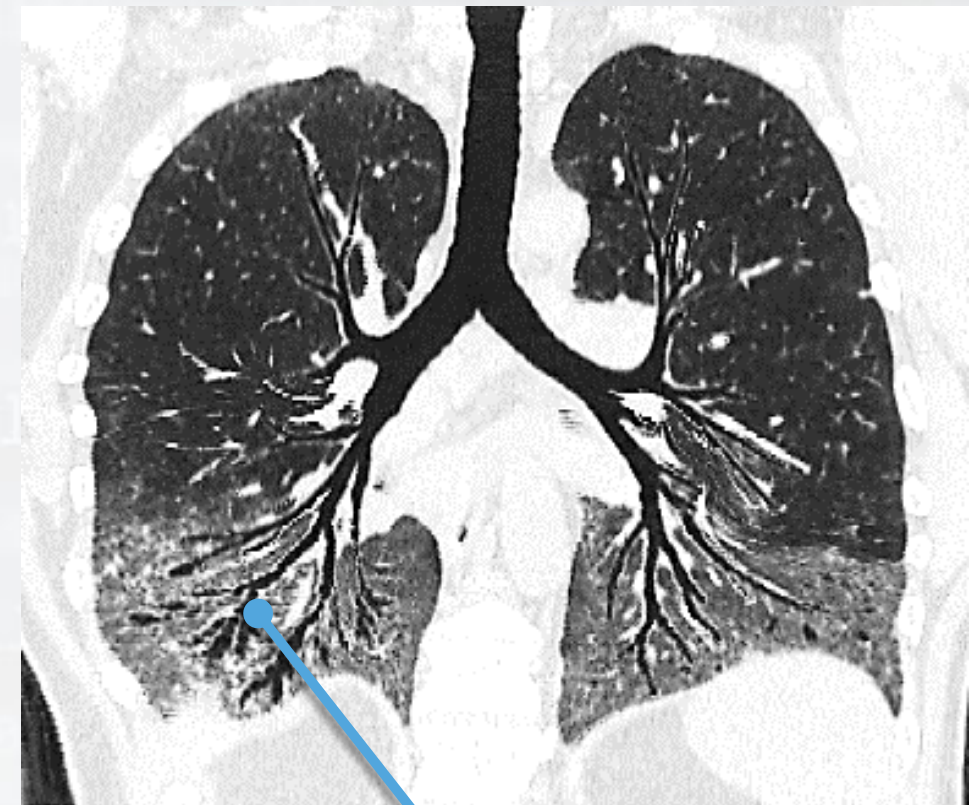
# Workflow Integration



# Return on Investment



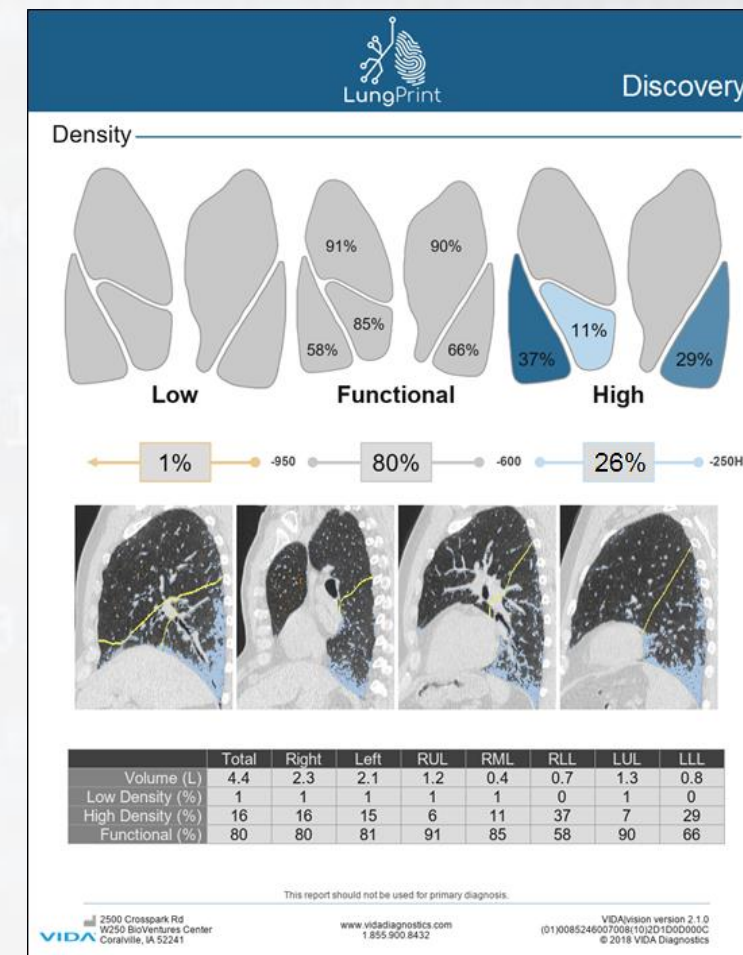
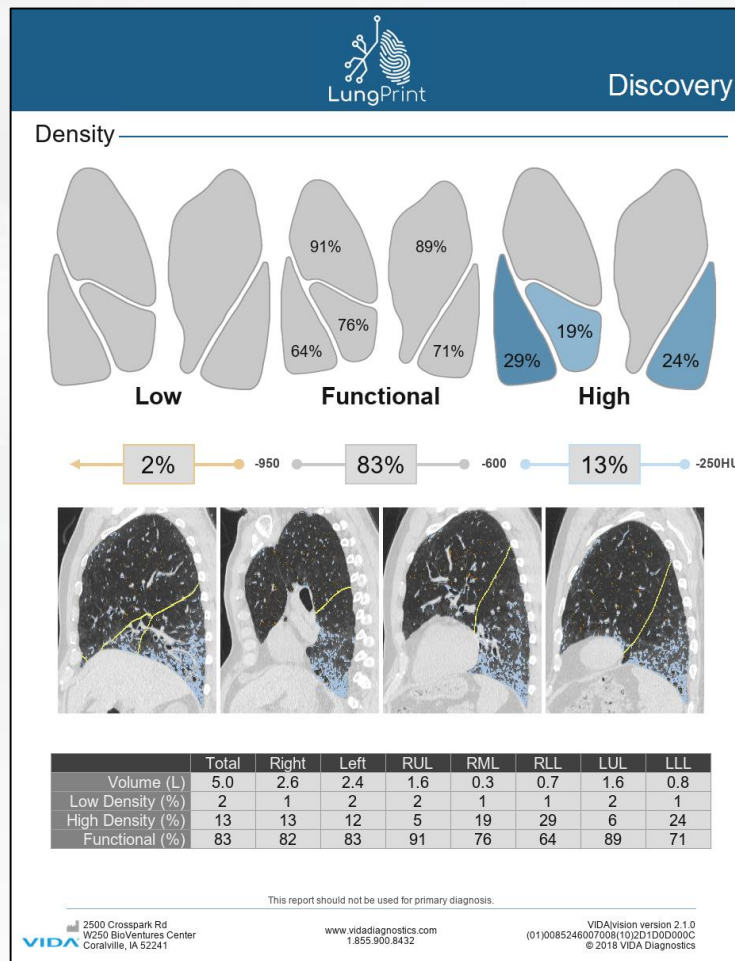
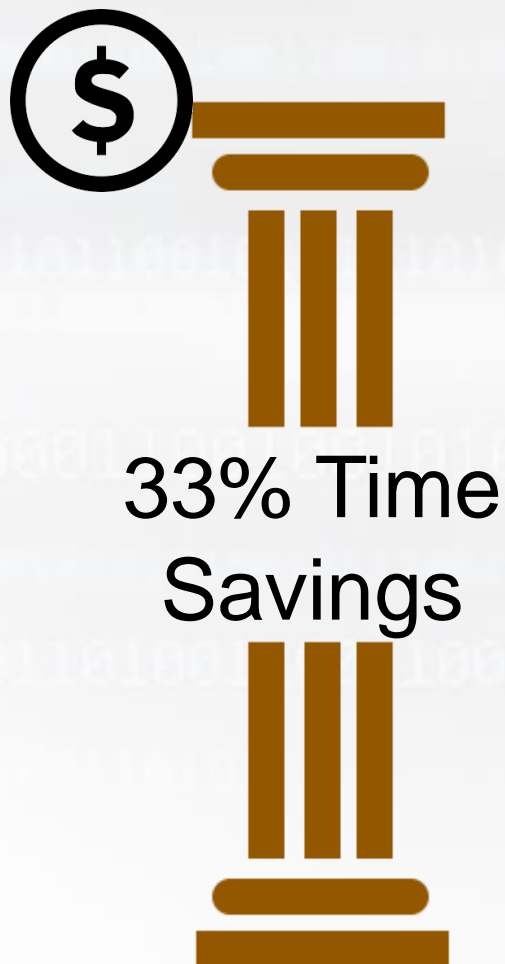
1.2 mm lumen diameter



2.5 mm lumen diameter



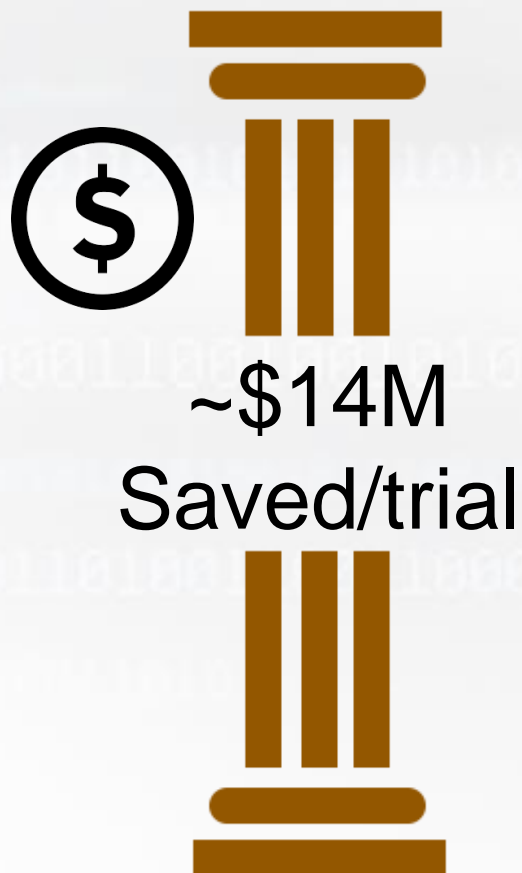
# Return on Investment



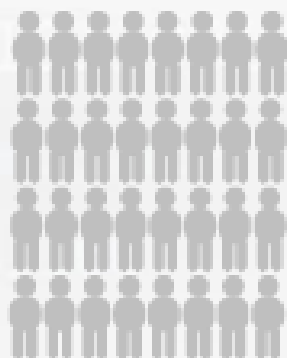
# Return on Investment

Triaging the right patients to trials increases success likelihood and shortens trials

## LungPrint Value



Target Population



Likely Responders



## The Impact of Selection Biomarkers

Success with and without Selection Biomarkers?

5m  
hrs

Yes

26%

No

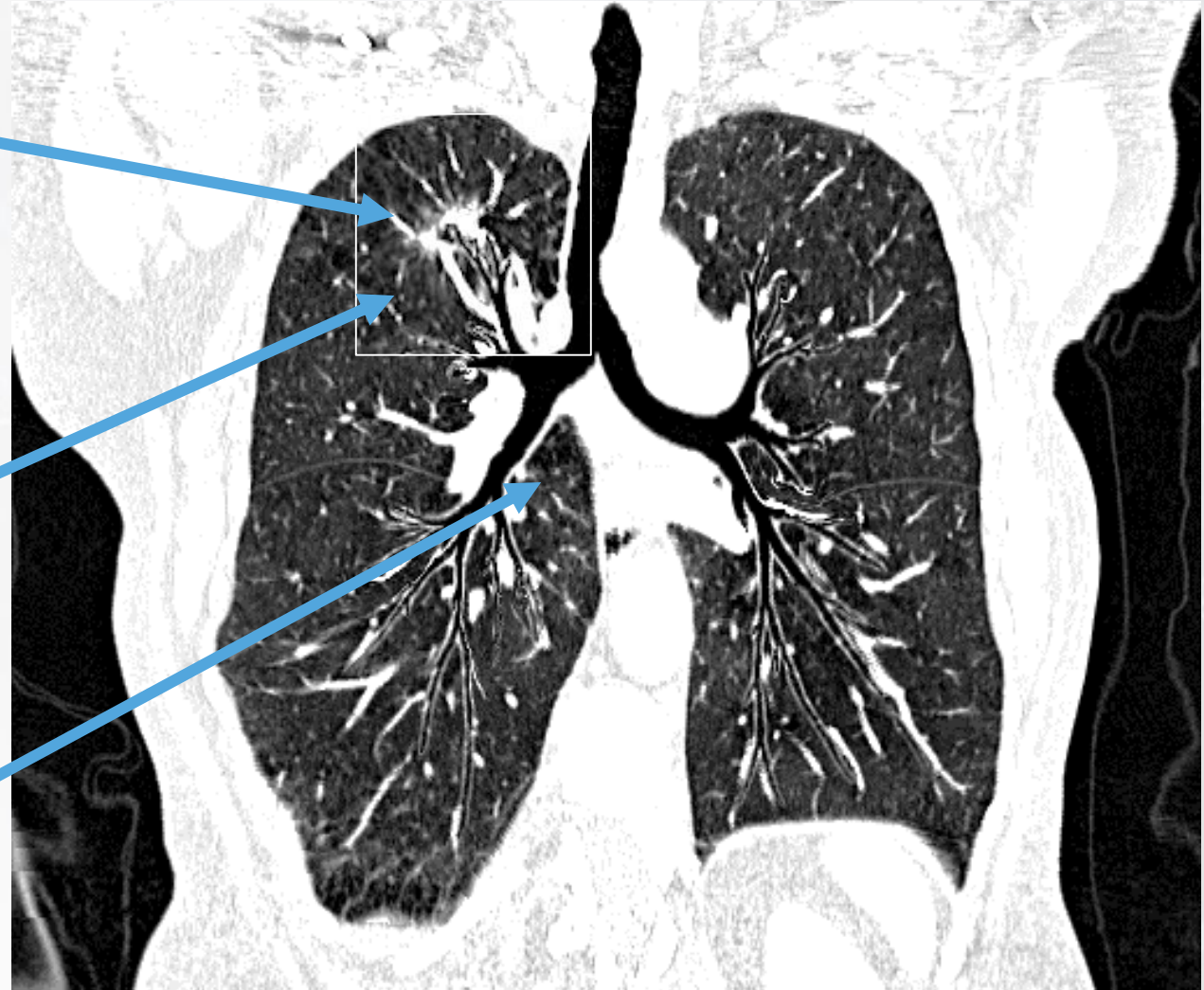
8%

Phase 1 to Approval<sup>1</sup>

Airway Involvement  
Unclear

Full View of Airways

Clear Airway Access  
to Lesion



Hyperion View



# VIDA built on the Pillars of AI



Clinical  
Relevancy

- Lung Disease a high economic burden
- Treatment Opportunities Increasing



Clinical  
Validation

- 70+ Trials
- 200+ Publications



Workflow  
Integration

- Workflow Integration with Strategic Partners
- AI Marketplaces for Hosting AI on the Rise



Return on  
Investment \$

- Radiology and Clinical Productivity
- Precision Treatment Development and Validation