



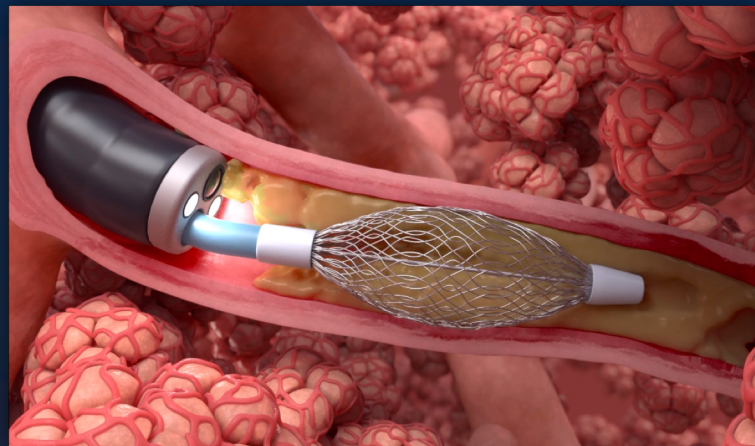
Respiratory Innovation Summit | May 17, 2019

**Jon Waldstreicher, MD
Founder & CEO**

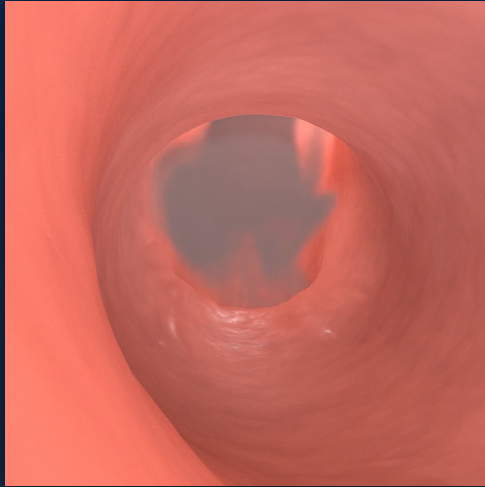
The RheOx™ System is limited to Investigational Use Only.

Overview

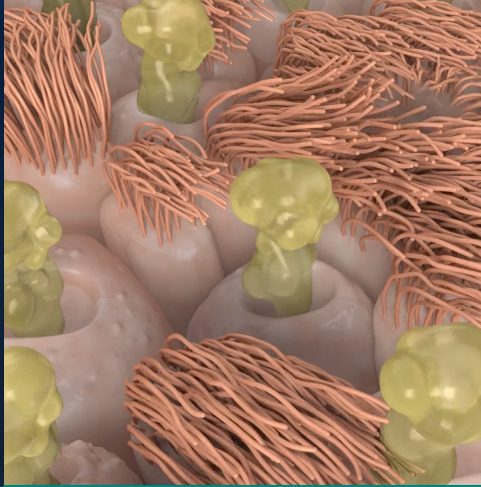
- Chronic Bronchitis is a massive unmet need
- Gala is developing RheOx™
- Clinical development is ongoing
- Targeting CE Mark mid-2019



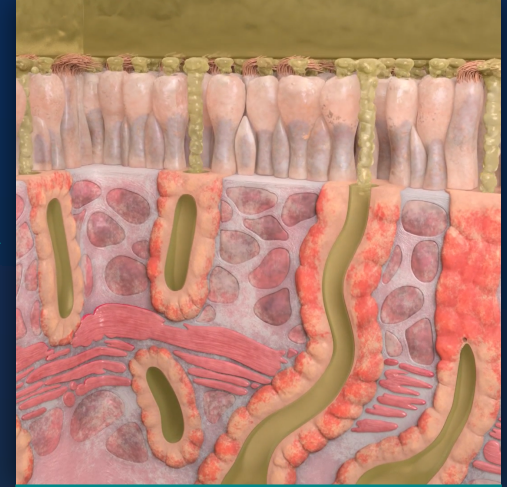
Chronic Bronchitis Physiology



Exposure to cigarette smoke, vaping, liquid, or pollutants



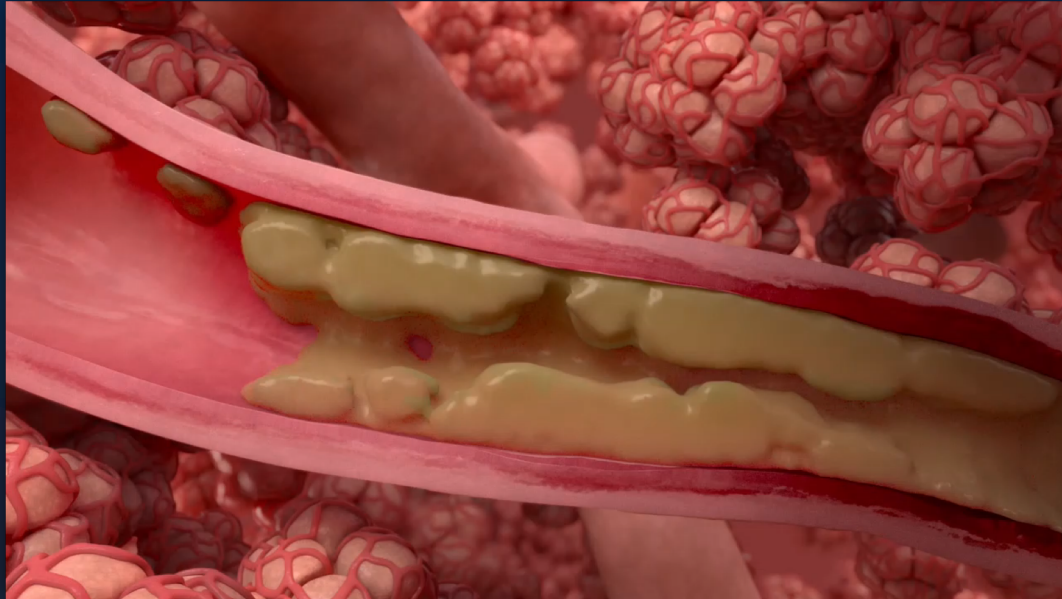
Production of mucus to expel irritants



Chronic inflammation causes more mucus production

Current treatment options DO NOT address mucus hypersecretion

Airflow Obstruction from Mucus



64% worse
respiratory
symptoms



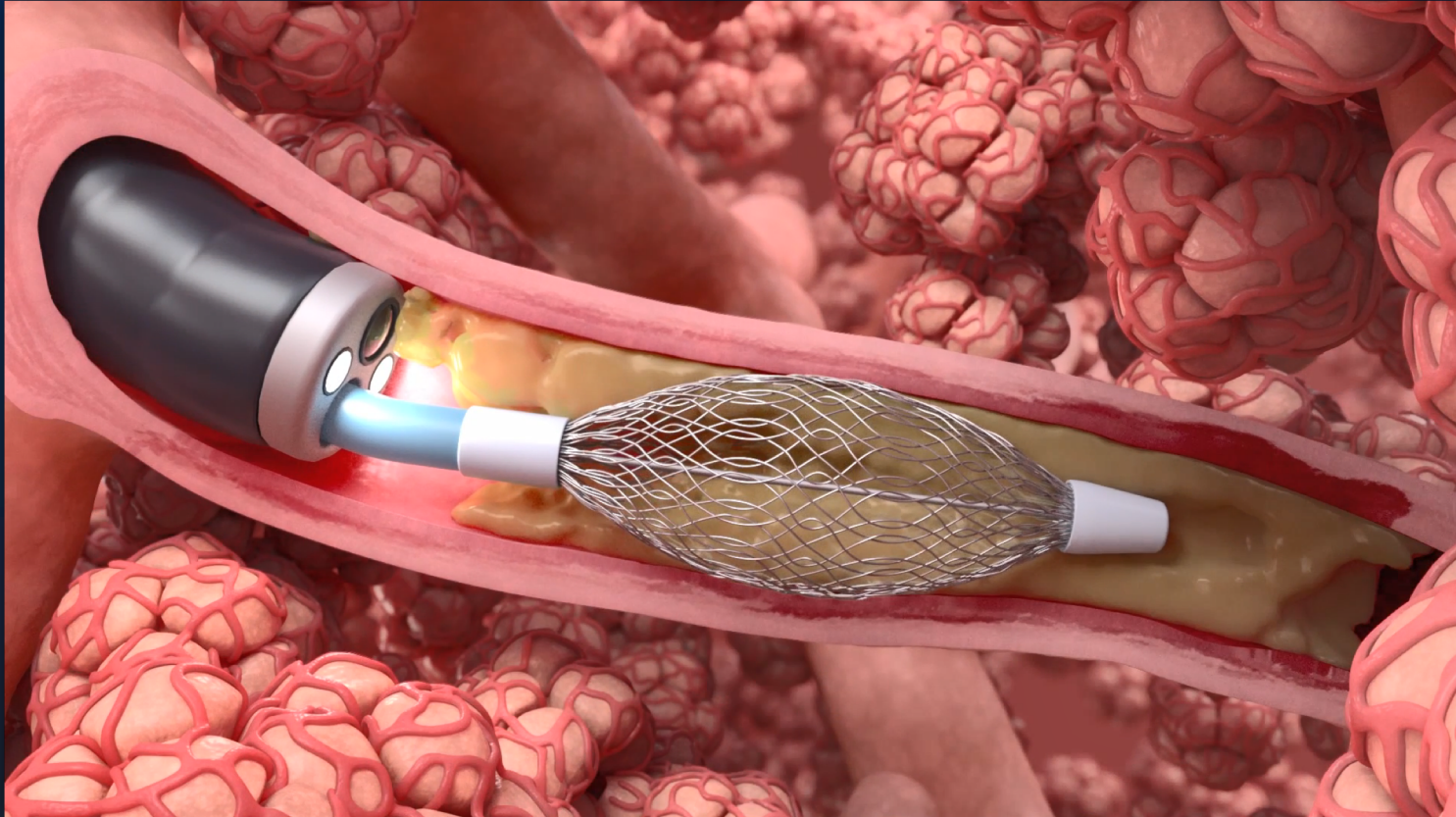
1.4X more
likely awakened
by cough



2X more
exacerbations

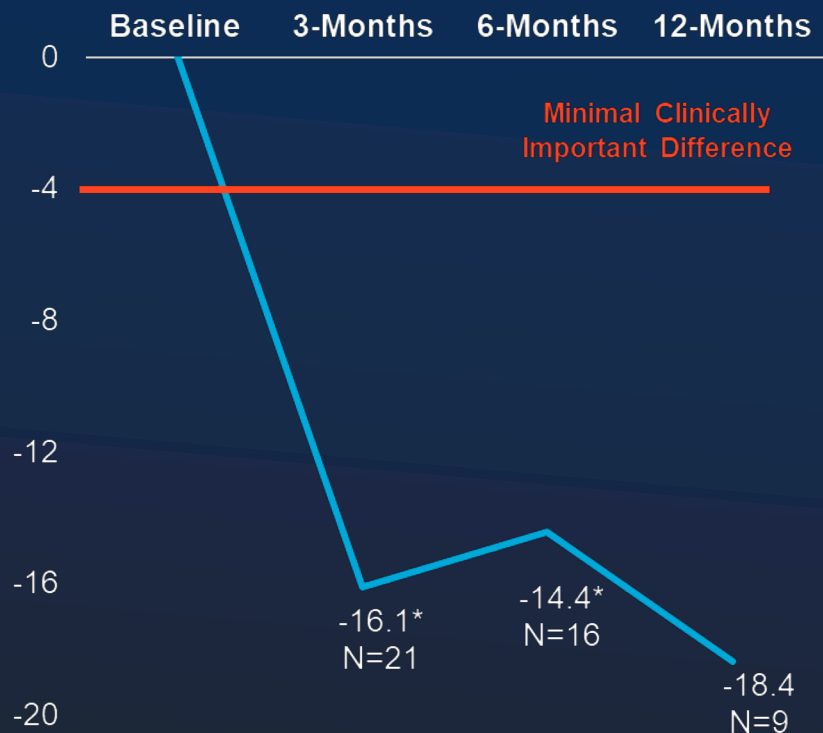
1. Kim et al, "The Chronic Bronchitic Phenotype of COPD:
An Analysis of the COPDGene Study." Chest 2011; 140:620-
633

Bronchial Rheoplasty Procedure



Quality of Life

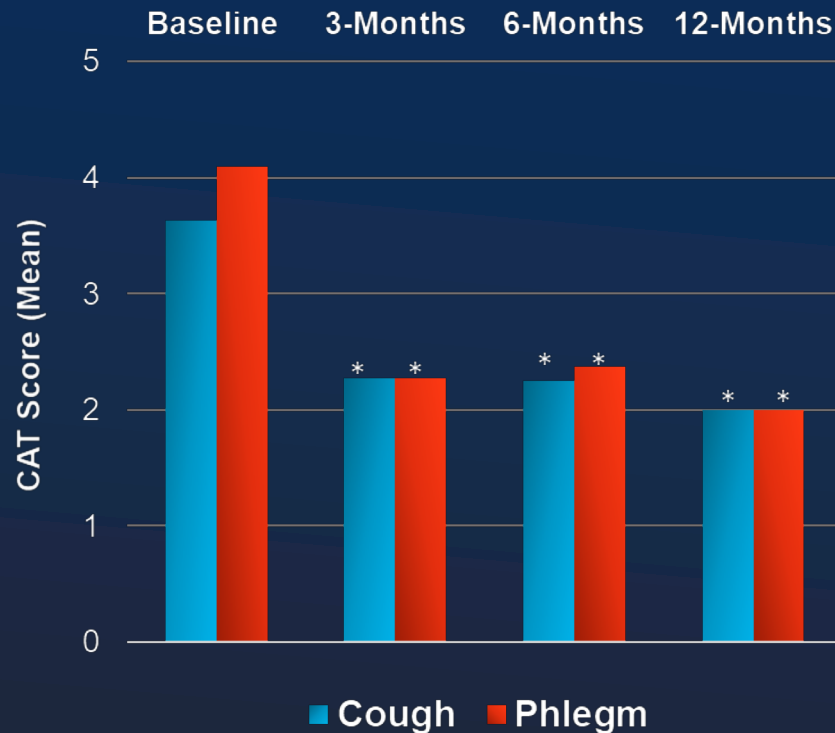
Saint George's Respiratory Questionnaire



* p-value < 0.05

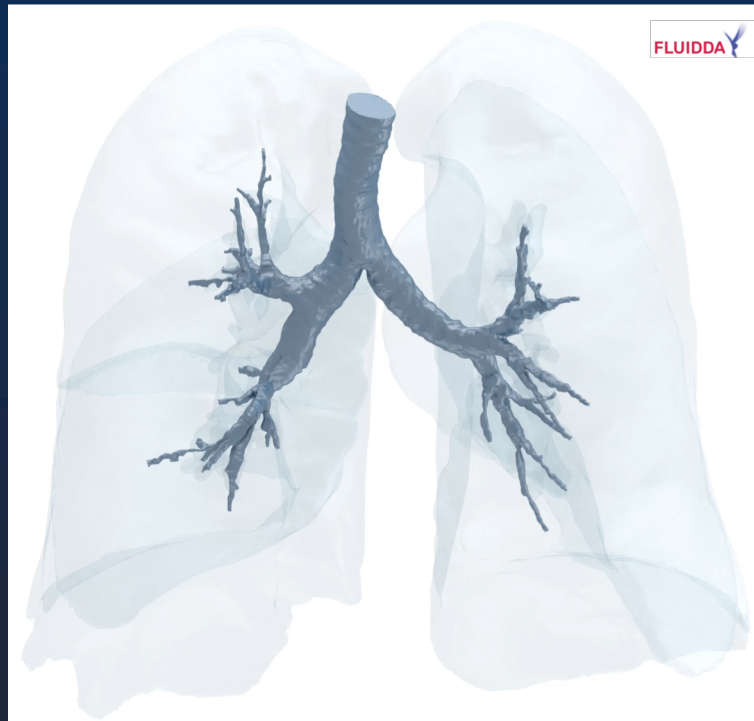
Data presented at ERS, Sept. 16, 2018

Cough and Phlegm Scores

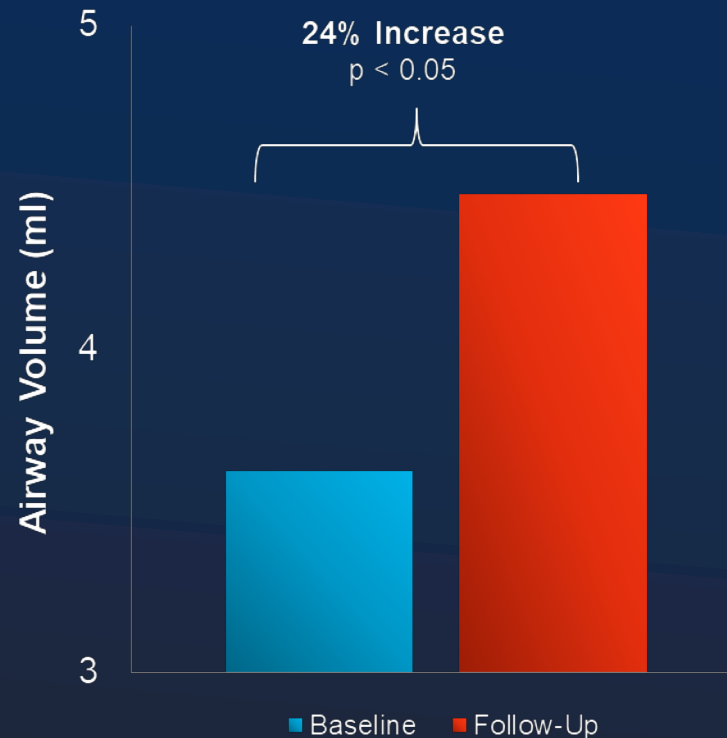


Objective Metrics- HRCT

HRCT: Baseline vs 3 Month Follow Up



Change in Airway Volume (per HRCT)



**Updated data to be presented next
Wednesday at 1:30 PM**

RheOx™ Clinical Program





jon@galatherapeutics.com